



Xtreme Mix™

Plural-Component Sprayers



Built for the demanding protective coatings market

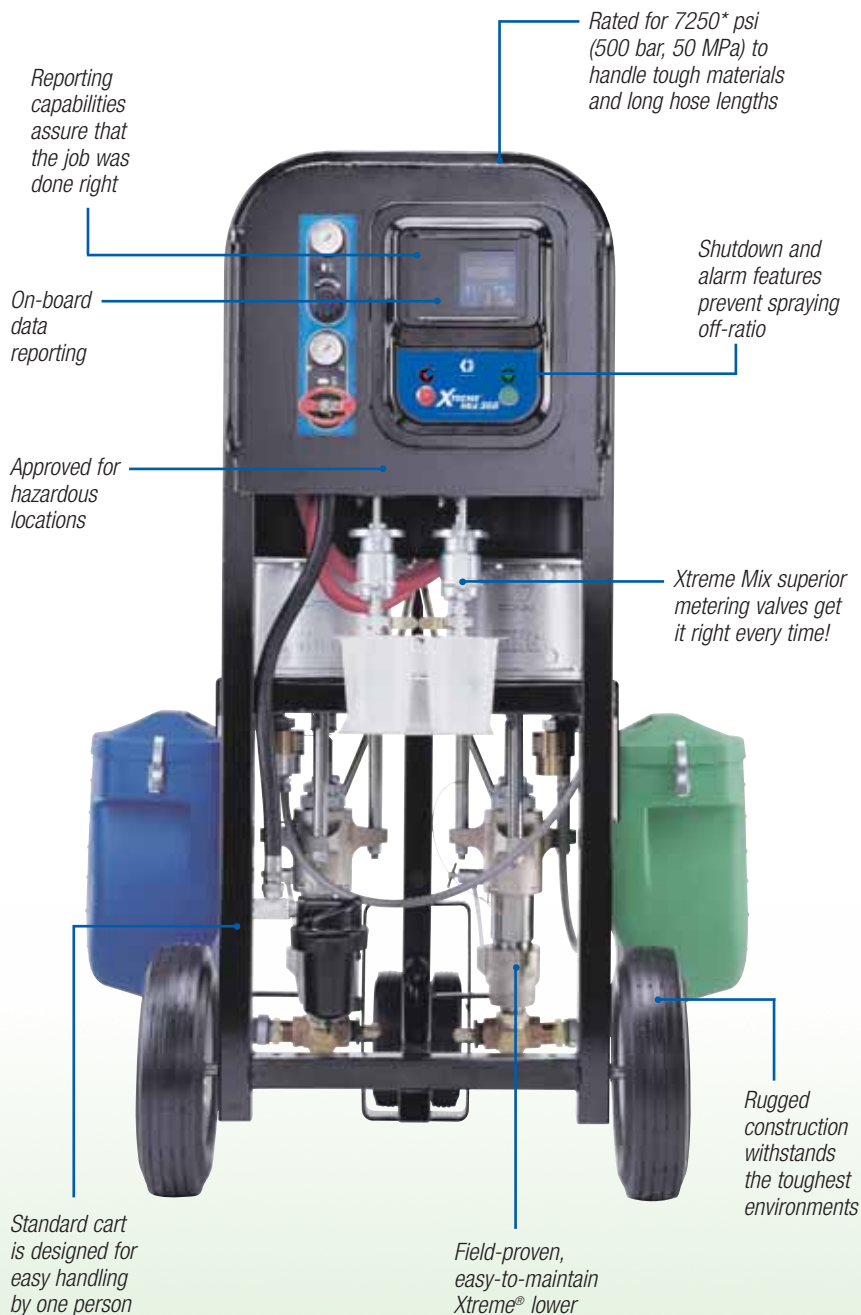
- Sprays tough, 100% solids coatings
- Easily sprays materials with short pot lives
- Remote manifold keeps materials separated until needed at the gun
- Manifold reduces waste and improves productivity
- Portable and simple-to-use
- Durable, dependable and built to last

PROVEN QUALITY. LEADING TECHNOLOGY.

Get the Job Done Right...Every Time.

Packed With Features You Can Depend On!

The combination of our SmartPump™ metering system, on-board diagnostics and auto shutdown helps prevent off-ratio spraying. Xtreme Mix offers even more with jobsite portability, on-demand mixing, and built-in data reporting. With superior technology and advanced features, Graco's Xtreme Mix airless sprayers outperform all other plural-component sprayers on the market.

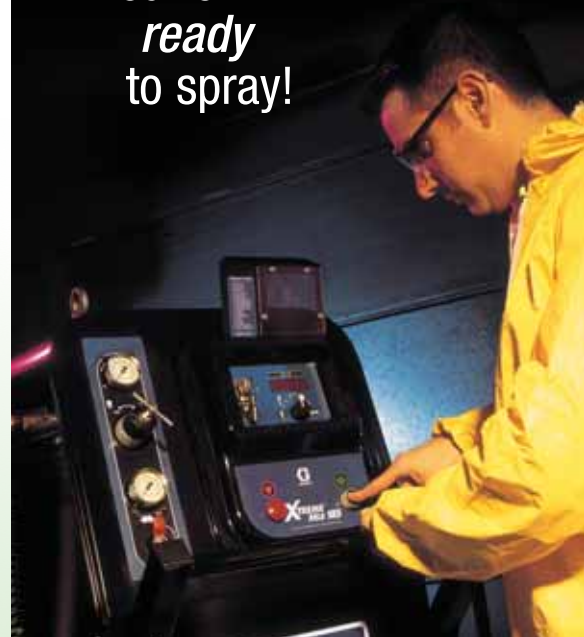


5 SIMPLE STEPS to Set up and Spray



- 1 Turn on air supply
- 2 Turn selector to PRIME to load each pump
- 3 Turn selector to SPRAY
- 4 Set desired ratio
- 5 Press the green start button

You're
ready
to spray!



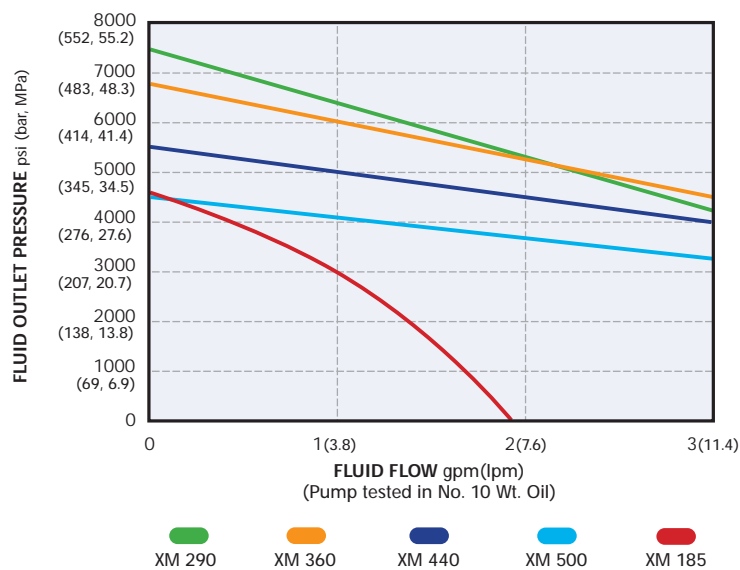
* Xtreme Mix 185 maximum working pressure is 4700 psi (324 bar, 32.4 MPa)

Outperforms All Other Sprayers on the Market.

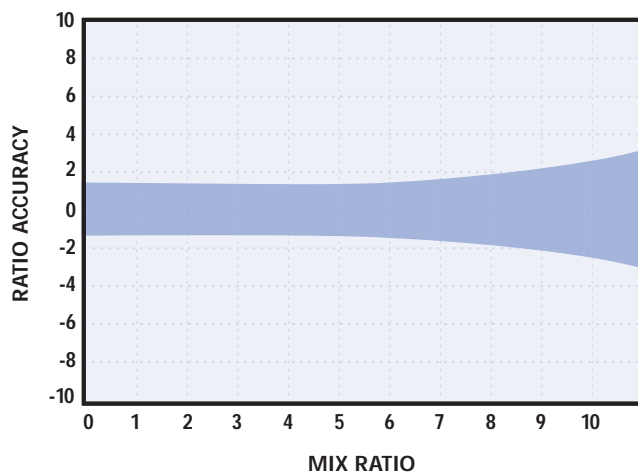
Xtreme Mix Selection Guide

Model	Maximum Working Pressure	Flow Rate @ 1:1 Ratio and 40 cpm	Flow Rate @ 4:1 Ratio and 40 cpm	Flow Rate @ 10:1 Ratio and 40 cpm	Flow Rates per cycle
Xtreme Mix 185	4700 psi (324 bar, 32.4 MPa)	1.0 gpm (4.0 lpm)	0.625 gpm (2.37 lpm)	0.55 gpm (2.08 lpm)	185 cc
Xtreme Mix 290	7250 psi (500 bar, 50.0 MPa)	3.1 gpm (11.7 lpm)	1.9 gpm (7.2 lpm)	1.7 gpm (6.4 lpm)	290 cc
Xtreme Mix 360	6800 psi (469 bar, 46.9 MPa)	3.9 gpm (14.8 lpm)	2.4 gpm (9.1 lpm)	2.1 gpm (7.9 lpm)	360 cc
Xtreme Mix 440	5600 psi (386 bar, 38.6 MPa)	4.5 gpm (17.0 lpm)	2.8 gpm (10.6 lpm)	2.5 gpm (9.5 lpm)	440 cc
Xtreme Mix 500	4500 psi (310 bar, 31.0 MPa)	5.3 gpm (20.1 lpm)	3.3 gpm (12.5 lpm)	2.9 gpm (11.0 lpm)	500 cc

Performance Chart



Xtreme Mix Ratio Accuracy*



* Tested with hydraulic oil in laboratory conditions

Selecting Your Xtreme Mix Sprayer

The Xtreme Mix provides precise and reliable electronic proportioning for all spray technologies. Use the pressure flow curves at the left to determine which Xtreme Mix sprayer is right for you.

HOW TO USE THIS CHART:

- Step 1:** Locate the required fluid flow along the bottom axis of the chart.
- Step 2:** Follow vertical line until it intersects with the solid curve.
- Step 3:** Follow curve to left axis to determine fluid outlet pressure.

On-Ratio Performance

Automatically maintain the mixing ratio within predefined tolerance limits, down to $\pm 1\%$. If accuracy exceeds $\pm 5\%$, the system will stop production, preventing any off-ratio material from reaching your project, virtually eliminating expensive re-work, saving both time and materials.

Data Reporting

Get the information you need to make sure each job is up to high quality standards. Xtreme Mix's Data Reporting capability records material usage, confirms on-ratio performance and includes date and time stamps for easy job tracking.

Technical Specifications

Mix ratio range	0.1-1 to 10:1 (in 0.1 increments)
Air supply pressure range*	50 to 110 psi (3.5 to 7.6 bar, 0.35 to 0.76 MPa)
Fluid filtration	60 mesh (238 micron standard)
Temperature range	
Operating	32 to 130°F (0 to 54°C)
Storage	30 to 160°F (-1 to 71°C)
Sound pressure	98 dBA at 100 psi (7 bar, 0.7 MPa)
Wetted parts	
Pumps	Carbon steel, alloy steel, 303, 440 and 17-4ph grades stainless steel, zinc and nickel plating, ductile iron, tungsten carbide, PTFE, leather
Metering valves	Carbon steel, zinc plating, carbide, polyethylene, leather
Manifold	Stainless steel (302, 303, 416), tungsten carbide with nickel binder, zinc plated carbon steel, nylon 6/6, PTFE, 440 SS, copper, polyethylene
Mixer	Stainless steel
Spray gun	17-4ph stainless steel, 4140 alloy steel, aluminum
Fluid viscosity range	200-20,000 cps (heavier viscosities can be mixed with use of optional heaters, heated hoses and hardware)
Maximum air consumption at 100 psi (7 bar, 0.7 MPa)	
Xtreme Mix 500 (45:1)	110 scfm (3.1 m3/min)
Xtreme Mix 440 (56:1)	125 scfm (3.5 m3/min)
Xtreme Mix 360 (68:1)	155 scfm (4.4 m3/min)
Xtreme Mix 290 (80:1)	180 scfm (5.1 m3/min)
Xtreme Mix 185 (45:1)	57 scfm (1.6 m3/min)
Communications	
PC	RS-232
Communication protocol	9600 baud, 8 bits, no parity

Dimensions - cart models without hoppers

Xtreme Mix 290, 360, 440, 500	44 L x 33 H x 64 W in (113 x 84 x 164 cm)
Xtreme Mix 185	44 L x 60 H x 30 W in (112 x 152 x 76 cm)

Weight

Xtreme Mix 290, 360, 440, 500	
Cart unit without hose and gun	625 lb (283.5 kg)
Xtreme Mix 185	
Cart unit with heaters	475 lb (215 kg)
Cart unit without heaters	350 lb (159 kg)

Instruction Manuals - Operation**

Xtreme Mix 290, 360, 440, 500	
309535	English
309545	Spanish
309536	French

Xtreme Mix 185	
310665	English

Instruction Manuals - Repair

Xtreme Mix 290, 360, 440, 500	
309518	English
309566	Spanish
309564	French
Xtreme Mix 185	
310666	English

* Recommended that you optimize static mixer when low air pressure range is used.

** Other languages are available, see www.graco.com for more information.

Ordering Information

Xtreme Mix Package Configurations

All units include hoppers, 50 ft (15.3 m) hose, 6 ft (1.8 m) whip hose and XTR spray gun.
All gallons per minute displayed at 40 cpm @ 1:1 ratio.

Hazardous Location Proportioners

233855	Xtreme Mix 500, standard motor, 45:1, 5.3 gpm (20.1 lpm)
233859	Xtreme Mix 500, quiet motor, 45:1, 5.3 gpm (20.1 lpm)
233856	Xtreme Mix 440, standard motor, 56:1, 4.5 gpm (17 lpm)
233860	Xtreme Mix 440, quiet motor, 56:1, 4.5 gpm (17 lpm)
233857	Xtreme Mix 360, standard motor, 68:1, 3.9 gpm (14.8 lpm)
233861	Xtreme Mix 360, quiet motor, 68:1, 3.9 gpm (14.8 lpm)
233858	Xtreme Mix 290, standard motor, 80:1, 3.1 gpm (11.7 lpm)
233862	Xtreme Mix 290, quiet motor, 80:1, 3.1 gpm (11.7 lpm)
234616	Xtreme Mix 185, 47:1, 1 gpm (4 lpm)
234838	Xtreme Mix 185, with (2) VISCON HP (240V) heaters, 47:1, 1 gpm (4 lpm)
234840	Xtreme Mix 185 with (2) VISCON HP (480V) heaters, 47:1, 1 gpm (4 lpm)



Non-Hazardous Location Proportioners

233863	Xtreme Mix 500, standard motor, 45:1, 5.3 gpm (20.1 lpm)
233867	Xtreme Mix 500, quiet motor, 45:1, 5.3 gpm (20.1 lpm)
233864	Xtreme Mix 440, standard motor, 56:1, 4.5 gpm (17 lpm)
233868	Xtreme Mix 440, quiet motor, 56:1, 4.5 gpm (17 lpm)
233865	Xtreme Mix 360, standard motor, 68:1, 3.9 gpm (14.8 lpm)
233869	Xtreme Mix 360, quiet motor, 68:1, 3.9 gpm (14.8 lpm)
233866	Xtreme Mix 290, standard motor, 80:1, 3.1 gpm (11.7 lpm)
233870	Xtreme Mix 290, quiet motor, 80:1, 3.1 gpm (11.7 lpm)
234617	Xtreme Mix 185, 47:1, 1 gpm (4 lpm)
234839	Xtreme Mix 185 with (2) VISCON HP (240V) heaters, 47:1, 1 gpm (4 lpm)
234841	Xtreme Mix 185 with (2) VISCON HP (480V) heaters, 47:1, 1 gpm (4 lpm)

Xtreme Mix Proportioners Set-Up for Pressure Feeding No hoppers, hose or gun; requires mixing manifold

248842	Xtreme Mix 360, standard motor, 68:1, 3.9 gpm (14.8 lpm)
--------	----------------------------------------------------------

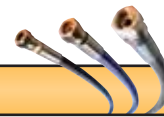
Wall mount units, no hoppers

234614	Xtreme Mix 185, hazardous locations, 47:1, 1 gpm (4.0 lpm)
234615	Xtreme Mix 185, non-hazardous locations, 47:1, 1 gpm (4.0 lpm)

Xtreme Mix Without Built-in Filters for Hazardous Locations

248831	Xtreme Mix 290, standard motor, 80:1, 3.1 gpm (11.7 lpm)
248832	Xtreme Mix 360, standard motor, 68:1, 3.9 gpm (14.8 lpm)
248833	Xtreme Mix 440, standard motor, 56:1, 4.5 gpm (17 lpm)
248834	Xtreme Mix 500, standard motor, 45:1, 5.3 gpm (20.1 lpm)

Accessories



Data Reporting Kits

Kits include cable and software

246322	Data reporting kit, Xtreme Mix 290, 360, 440, 500
248404	Data reporting kit, Xtreme Mix 185

Guns and Gun Accessories

Maximum working pressure: 7250 psi (500 bar, 50.0 MPa)

246294	10 in (254 mm) gun extension
246295	15 in (380 mm) gun extension
246296	18 in (457 mm) gun extension
246297	180° spray nozzle

XTR™-5 Airless Spray Gun

Maximum working pressure: 5000 psi (345 bar, 34.5 MPa)

XTR500	1" round handle, four-finger trigger, no tip
XTR501	1" round handle, four-finger trigger, flat tip
XTR502	Oval insulated handle, four-finger trigger, XHD RAC tip
XTR503	Oval insulated handle, two-finger trigger, XHD RAC tip
XTR504	1" round handle, four-finger trigger, XHD RAC tip
XTR505	1" round handle, two-finger trigger, XHD RAC tip
XTR506	7/8" round handle, two-finger trigger, XHD RAC tip
XTR507	7/8" round handle, two-finger trigger, XHD RAC tip

XTR-7 Airless Spray Gun

Maximum working pressure: 7250 psi (500 bar, 50.0 MPa)

XTR700	Round handle, four-finger trigger, no tip
XTR701	Round handle, four-finger trigger, flat tip
XTR702	Oval insulated handle, four-finger trigger, XHD RAC tip
XTR703	Oval insulated handle, two-finger trigger, XHD RAC tip
XTR704	Round handle, four-finger trigger, XHD RAC tip
XTR705	Round handle, two-finger trigger, XHD RAC tip

Heated Hose Controller - for non-hazardous locations

248921	Low voltage controller, requires FTS; includes p/n 15C517
248926	Fluid temperature sensor (FTS) (other ratios)

Heated Hose - 5000 psi (345 bar, 34.5 MPa), 50 ft (15 m)

For non-hazardous locations

15E750	Hose A, ID 1/4 (6.3 mm)
15E751	Hose A, ID 3/8 (9.5 mm)
15E752	Hose B, ID 3/8 (9.5 mm)
248907	Hose Set, ID 1/4(A) x 3/8(B) (6.3 x 9.5 mm)
248908	Hose Set, ID 3/8(A) x 3/8(B) (9.5 x 9.5 mm)

Fittings

15B729	Coupling, 7250 psi (500 bar, 50.0 MPa) 3/8 npt(f) x 3/8 npsm(m)
150287	Coupling, 7250 psi (500 bar, 50.0 MPa) 3/8 npt(f) x 1/4 npt(m)
214925	Swivel, 5000 psi (345 bar, 34.5 MPa), 3/8 npt(f) x 1/4 npsm(f)
236987	Swivel, 7250 psi (500 bar, 50.0 MPa), 1/4 npsm(m) x 1/4 npsm(f)
189018	Swivel, 5800 psi (399 bar, 39.9 MPa), 1/4 npsm(m) x 1/4 npsm(f)
156971	Nipple, 7250 psi (500 bar, 50.0 MPa), 1/4 npt x 1/4 npt(mbe)
165198	Nipple, 7250 psi (500 bar, 50.0 MPa), 1/4 npt x 3/8 npt(mbe)
162449	Nipple, 7250 psi (500 bar, 50.0 MPa), 1/4 npt x 1/2 npt(mbe)
159239	Nipple, 7250 psi (500 bar, 50.0 MPa), 3/8 npt x 1/2 npt(mbe)
158491	Nipple, 7250 psi (500 bar, 50.0 MPa), 1/2 npt x 1/2 npt(mbe)

Viscon® HP Fluid Heaters

245848	Hazardous location, 120 VAC, 2300 watts, 19.2 amps
245862	Hazardous location, 200 VAC, 4000 watts, 20 amps
245863	Hazardous location, 240 VAC, 4000 watts, 16.7 amps
246254	Hazardous location, 380 VAC, 4000 watts, 10.5 amps
245864	Hazardous location, 480 VAC, 4000 watts, 8.3 amps
245867	Non-hazardous location, 120 VAC, 2300 watts, 19.2 amps
245868	Non-hazardous location, 200 VAC, 4000 watts, 20.0 amps
245869	Non-hazardous location, 240 VAC, 4000 watts, 16.7 amps
246276	Non-hazardous location, 380 VAC, 4000 watts, 10.5 amps
245870	Non-hazardous location, 480 VAC, 4000 watts, 8.3 amps

Manifold Accessories

234026	Two spray gun manifold with independent solvent flush
248874	Manifold, remote mix, no restrictor, bare
248923	Manifold, remote mix, with restrictors, skid-mount
15E725	Manifold, flow-through non-mixing for use with remote mix manifold

Filter Screens

238435	30 mesh (595 micron), 3 pack
238437	60 mesh (290 micron), 3 pack
238439	100 mesh (149 micron), 3 pack

Kits and Accessories

246304	Heater bracket kit for Xtreme Mix 290-500
248428	Xtreme Mix 185 heater kit with re-circulation (heater sold separately); includes components needed to add one heater and one re-circulation kit
248652	Xtreme Mix 185 re-circulation kit; includes solenoid, dispense valve and hoses needed for one re-circulation setup
248440	Xtreme Mix 185 repair kit

Tuff-Stack™ Seal Repair Kits (order two kits per Xtreme Mix)

248442	Xtreme Mix 185
244900	Xtreme Mix 290
244901	Xtreme Mix 360
244902	Xtreme Mix 440
244903	Xtreme Mix 500

Supply Accessories

234017	7.5 gal (28 l) blue fluid tank
234097	7.5 gal (28 l) green fluid tank
248224	2.5 gal (9.5 l) ISO supply kit
248225	5 gal (19 l) ISO supply kit

Other Accessories

511352	Static mixer
246078	Scuff guard, 50 ft (15.2 m) braided polyethylene mesh
246456	Scuff guard, 50 ft (15.2 m) polyethylene bag
206995	Graco throat seal liquid (TSL), 1 qt (0.9 l)
206996	Graco throat seal liquid (TSL), 1 gal (3.8 l)

Xtreme-Duty 4500 psi (310 bar) High Pressure Hose

Part #	Length	Hose Diameter	Female NPSM
H42503	3 ft (0.9 m)	1/4 in (6.4 mm)	1/4 in
H42506	6 ft (1.8 m)	1/4 in (6.4 mm)	1/4 in
H42510	10 ft (3.0 m)	1/4 in (6.4 mm)	1/4 in
H42525	25 ft (7.6 m)	1/4 in (6.4 mm)	1/4 in
H42550	50 ft (15.2 m)	1/4 in (6.4 mm)	1/4 in
H4251X	100 ft (30.5 m)	1/4 in (6.4 mm)	1/4 in
H43803	3 ft (0.9 m)	3/8 in (9.5 mm)	3/8 in
H43806	6 ft (1.8 m)	3/8 in (9.5 mm)	3/8 in
H43810	10 ft (3.0 m)	3/8 in (9.5 mm)	3/8 in
H43825	25 ft (7.6 m)	3/8 in (9.5 mm)	3/8 in
H43850	50 ft (15.2 m)	3/8 in (9.5 mm)	3/8 in
H4381X	100 ft (30.5 m)	3/8 in (9.5 mm)	3/8 in
H45010	10 ft (3.0 m)	1/2 in (12.7 mm)	1/2 in
H45025	25 ft (7.6 m)	1/2 in (12.7 mm)	1/2 in
H45050	50 ft (15.2 m)	1/2 in (12.7 mm)	1/2 in
H4501X	100 ft (30.5 m)	1/2 in (12.7 mm)	1/2 in

Xtreme-Duty 5600 psi (386 bar) High Pressure Hose

Part #	Length	Hose Diameter	Female NPSM
H52503	3 ft (0.9 m)	1/4 in (6.4 mm)	1/4 in
H52506	6 ft (1.8 m)	1/4 in (6.4 mm)	1/4 in
H52510	10 ft (3.0 m)	1/4 in (6.4 mm)	1/4 in
H52525	25 ft (7.6 m)	1/4 in (6.4 mm)	1/4 in
H52550	50 ft (15.2 m)	1/4 in (6.4 mm)	1/4 in
H5251X	100 ft (30.5 m)	1/4 in (6.4 mm)	1/4 in
H53803	3 ft (0.9 m)	3/8 in (9.5 mm)	3/8 in
H53806	6 ft (1.8 m)	3/8 in (9.5 mm)	3/8 in
H53810	10 ft (3.0 m)	3/8 in (9.5 mm)	3/8 in
H53825	25 ft (7.6 m)	3/8 in (9.5 mm)	3/8 in
H53850	50 ft (15.2 m)	3/8 in (9.5 mm)	3/8 in
H5381X	100 ft (30.5 m)	3/8 in (9.5 mm)	3/8 in
H55010	10 ft (3.0 m)	1/2 in (12.7 mm)	1/2 in
H55025	25 ft (7.6 m)	1/2 in (12.7 mm)	1/2 in
H55050	50 ft (15.2 m)	1/2 in (12.7 mm)	1/2 in
H5501X	100 ft (30.5 m)	1/2 in (12.7 mm)	1/2 in

Xtreme-Duty 7250 psi (500 bar) High Pressure Hose

Part #	Length	Hose Diameter	Female NPSM
H72503	3 ft (0.9 m)	1/4 in (6.4 mm)	1/4 in
H72506	6 ft (1.8 m)	1/4 in (6.4 mm)	1/4 in
H72510	10 ft (3.0 m)	1/4 in (6.4 mm)	1/4 in
H72525	25 ft (7.6 m)	1/4 in (6.4 mm)	1/4 in
H72550	50 ft (15.2 m)	1/4 in (6.4 mm)	1/4 in
H7251X	100 ft (30.5 m)	1/4 in (6.4 mm)	1/4 in
H73803	3 ft (0.9 m)	3/8 in (9.5 mm)	3/8 in
H73806	6 ft (1.8 m)	3/8 in (9.5 mm)	3/8 in
H73810	10 ft (3.0 m)	3/8 in (9.5 mm)	3/8 in
H73825	25 ft (7.6 m)	3/8 in (9.5 mm)	3/8 in
H73850	50 ft (15.2 m)	3/8 in (9.5 mm)	3/8 in
H7381X	100 ft (30.5 m)	3/8 in (9.5 mm)	3/8 in
H75010	10 ft (3.0 m)	1/2 in (12.7 mm)	1/2 in
H75025	25 ft (7.6 m)	1/2 in (12.7 mm)	1/2 in
H75050	50 ft (15.2 m)	1/2 in (12.7 mm)	1/2 in
H7501X	100 ft (30.5 m)	1/2 in (12.7 mm)	1/2 in



ABOUT GRACO

PROVEN QUALITY. LEADING TECHNOLOGY.

Founded in 1926, Graco is a world leader in fluid handling systems and components. Graco products move, measure, control, dispense and apply a wide range of fluids and viscous materials used in vehicle lubrication, commercial and industrial settings.

The company's success is based on its unwavering commitment to technical excellence, world-class manufacturing and unparalleled customer service. Working closely with qualified distributors, Graco offers systems, products and technology that set the quality standard in a wide range of fluid handling solutions. Graco provides equipment for spray finishing, protective coating, paint circulation, lubrication, and dispensing sealants and adhesives, along with power application equipment for the contractor industry. Graco's ongoing investment in fluid management and control will continue to provide innovative solutions to a diverse global market.

GRACO LOCATIONS

MAILING ADDRESS

P.O. Box 1441
Minneapolis, MN 55440-1441
Tel: 612.623.6000
Fax: 612.623.6777

AMERICAS

MINNESOTA

Worldwide Headquarters
Graco Inc.
88-11th Avenue N.E.
Minneapolis, MN 55413

EUROPE

BELGIUM

European Headquarters
Graco N.V.
Industrieterrein-Oude Bunders
Slakweidestraat 31
3630 Maasmechelen,
Belgium
Tel: 32.89.770.700
Fax: 32.89.770.777

ASIA PACIFIC

AUSTRALIA

Graco Australia Pty Ltd
P.O. Box 558
Level 2 / 541 Blackburn Rd.
Mount Waverley VIC 3149
Australia
Tel: 61.3.9550.0848
Fax: 61.3.9550.0816

CHINA

Graco Fluid Equipment
(Shanghai) Co. Ltd.
Room 118 1st Floor
No.2 Xin Yuan Building
No.509 Cao Bao Road
Shanghai, P.R. China 200233
Tel: 86.21.649.50088
Fax: 86.21.649.50077

INDIA

Graco (HK) Ltd. India Liaison Office
Room 103, Level 4, Augusta Point
Golf Course Road
Gurgaon, Haryana, India 122001
Tel: +91.124.435.4208

JAPAN

Graco K.K.
1-27-12 Hayabuchi
Tsuzuki-ku
Yokohama City, Japan 2240025
Tel: 81.45.593.7300
Fax: 81.45.593.7301

KOREA

Graco Korea Inc.
Choheung Bank Building
4th Floor #1599
Gwanyang-Dong, Dongan-Ku,
Anyang-Si, Gyeonggi-Do,
Korea 431-060
Tel: 82(Korea).31.476.9400
Fax: 82(Korea).31.476.9801

SALES/DISTRIBUTION/SERVICE

Call today for product information or to request a demonstration.

1.877.84GRACO (1-877-844-7226) or visit us at www.graco.com.

Graco Inc. is registered to I.S. EN ISO 9001

North America
Industrial Customer Service
800-328-0211
FAX 877-340-6427